

beauty  
star



BEAUTYFALL



# BENEFITS OF THE BEAUTYFALL TREATMENT

The Shirodhara Waterfall, a practice rooted in Ayurvedic medicine, involves the slow release of warm water onto the forehead, promoting deep relaxation and stimulating blood circulation in the scalp. This helps nourish hair follicles, improving hair health, reducing hair loss, and encouraging growth. Additionally, it relaxes the nervous system and alleviates stress, one of the common causes of hair thinning.

Infrared light penetrates the scalp, stimulating microcirculation and promoting collagen production. This treatment strengthens the hair, enhancing its elasticity and shine while reducing scalp inflammation and preventing issues such as dandruff and thinning. The thermal energy also improves the absorption of nourishing and hydrating treatments, giving hair greater vitality and resilience.



Beautyfall can be installed  
on all wash stations.



# INSTALLATION ON THE WASH STATION



1 Completely insert the device in an easy-to-use direction, ensuring there are no gaps, and tighten the fixing screws to secure it to the ceramic.



2 The position can be adjusted by moving it left or right before securely tightening the screws. After adjusting the position, tighten the upper screws of the support.



3 After installing BEAUTYFALL, lift the fixing ring and adjust the position of the support and the water tank. When adjusting the position or angle of the water tank, instead of holding and moving it directly, grip the upper support of the fixing ring and the support just above the water tank.



4 Once positioned, align the screws on the support and the device into the same shape and lower the fixing ring.



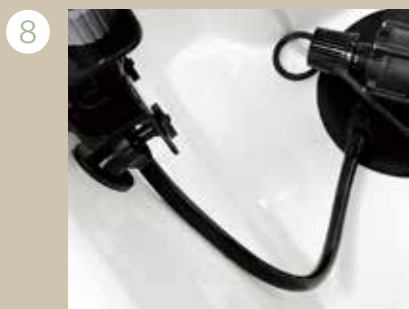
5 Ensure it is lowered so that both screws are completely covered and not visible.



6 The rubber tube on the installed fixture is now connected to the motor's water outlet.



7 Position the motor on the drainage hole of the shampoo bed.



8 When installing the motor, ensure that the host is not bent.



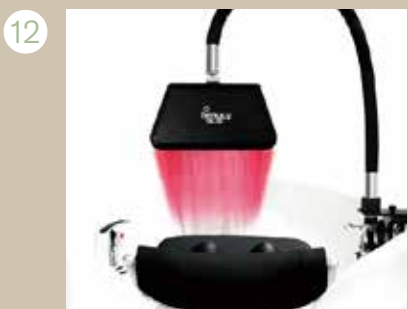
9 During use, the motor must be completely submerged in water.



10 Connect the switch and adapter, then press the power button to operate the device. Recommended water pressure level: L3



11 During the treatment, the LED attachment on the back of the water container can be used.



12 Finally, you can experience BEAUTYFALL by BeautyStar.

# PRACTICAL USAGE INFORMATION



Adjustable arm suitable for any type of curvature. It can be moved when the client has finished the treatment or before the shampoo and rinsing phase. For the Shirodhara treatment, do not use leftover shampoo water, only clean water.



Ensure that the water completely covers the pump in the recirculation system for proper operation.

**BETWEEN EACH CYCLE, THE RECIRCULATION SYSTEM MUST BE SANITIZED, AND THE CASCADE MUST BE CLEANED.**

## ACIDO CARBONICO

Available on request  
(Optional)



Carbonic acid tablets (to achieve a better effect on fatigue recovery and waste removal, helps to eliminate impurities and make the hair softer and shinier).





---

**BeautyStar** - A.A.M. Srl | Piazzale Guerrino Maletti, 1  
42019 Scandiano (RE) - Italy  
[www.beautystar.it](http://www.beautystar.it) | [info@beautystar.com](mailto:info@beautystar.com)